

Installing the CADE Root Cert

As you may know the CADE lab runs a number of secure websites such as webhandin, the network request form and our webmail page. As web browsers have evolved so have their security warnings. This has caused some concern with users who think they may be under attack. Because the CADE lab acts as it's own Certificate Authority (CA) we are not listed in any web browser by default. You will therefore need to manually install our ROOT certificate to avoid receiving annoying pop ups and security warnings when visiting one of our websites. This certificate will also be valid for all future secure sites created and hosted under the CADE lab.

The certificate can be installed by going to:

www.cade.utah.edu/certs

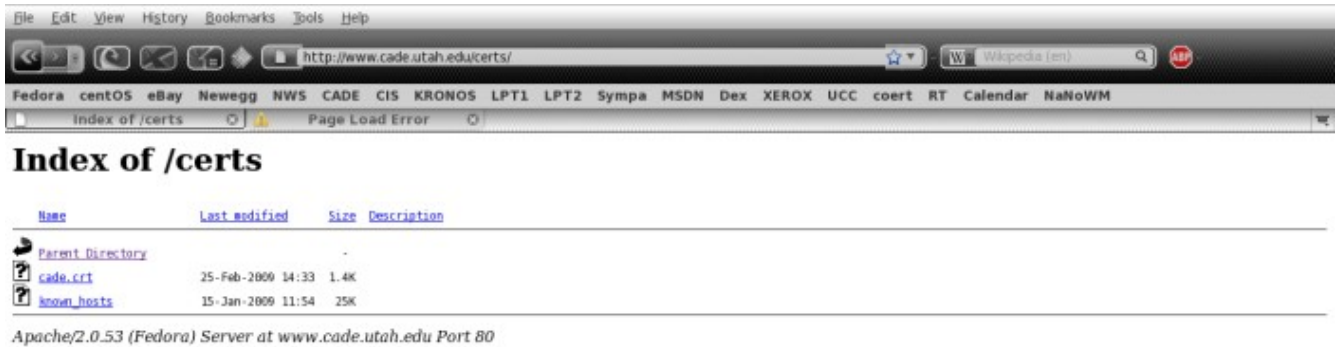
To install the cert into your browser follow the instructions below. These cover the following browsers:

Firefox

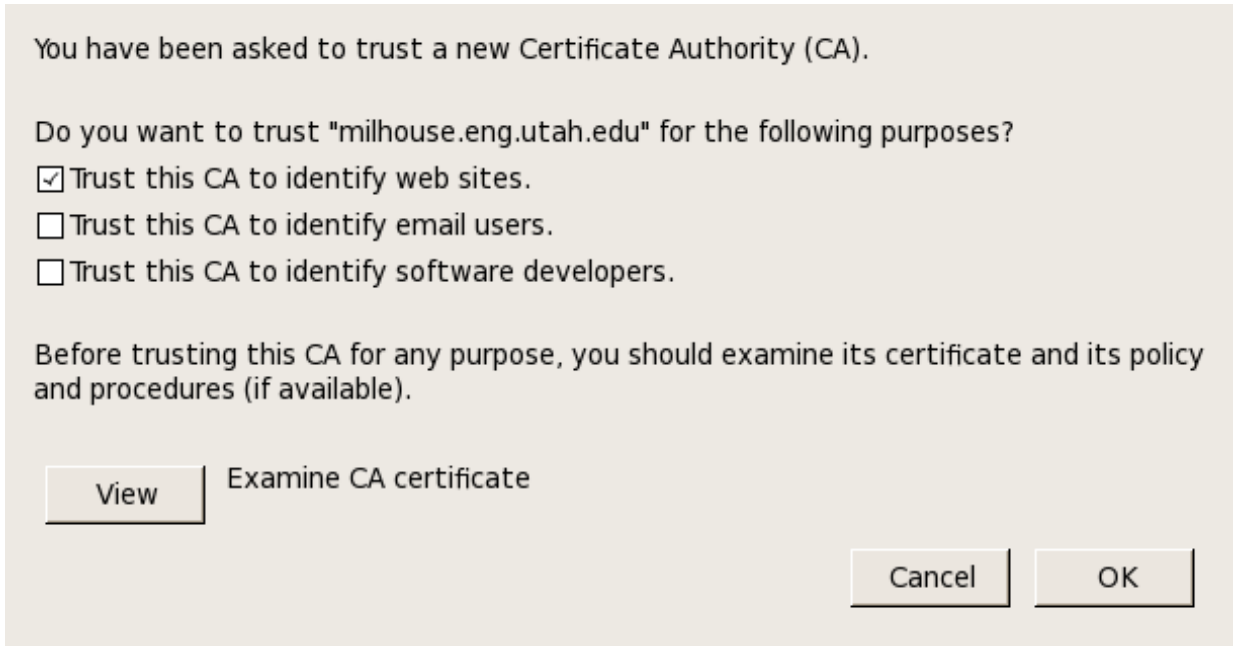
Internet Explorer

Installing the Root cert in FireFox

1. Go to www.cade.utah.edu/certs and click on the file called cade.crt



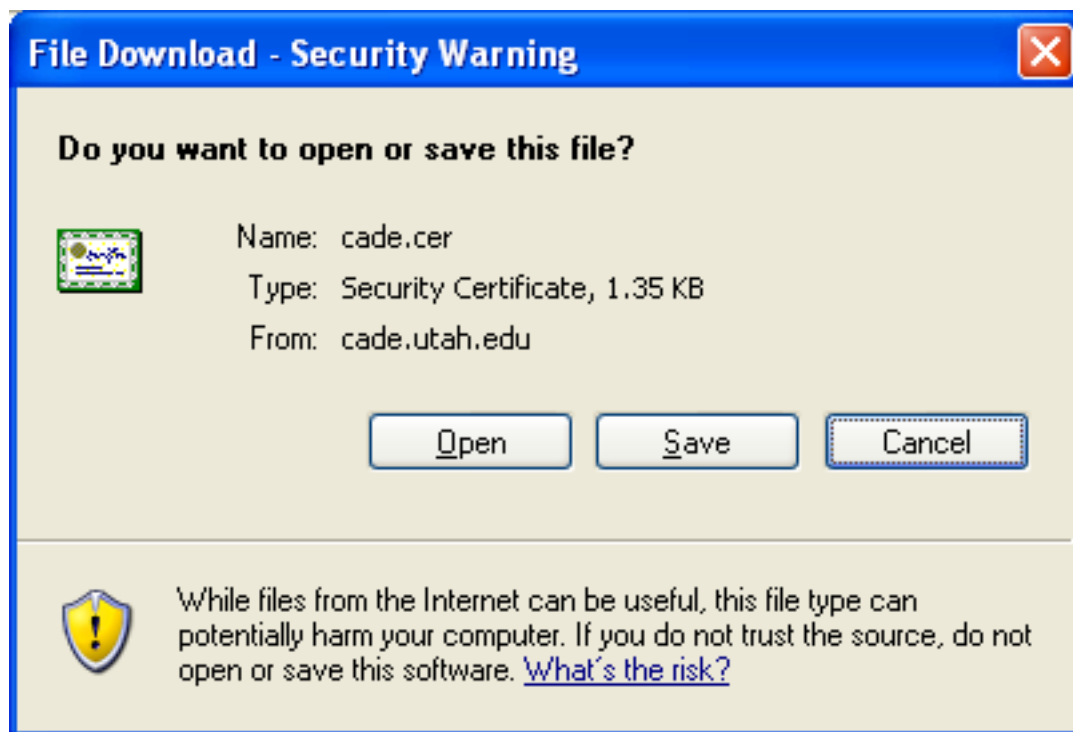
2). You should now have a window appear asking how you would like to use this certificate. Select “Trust this CA to identify websites” and click “Ok”



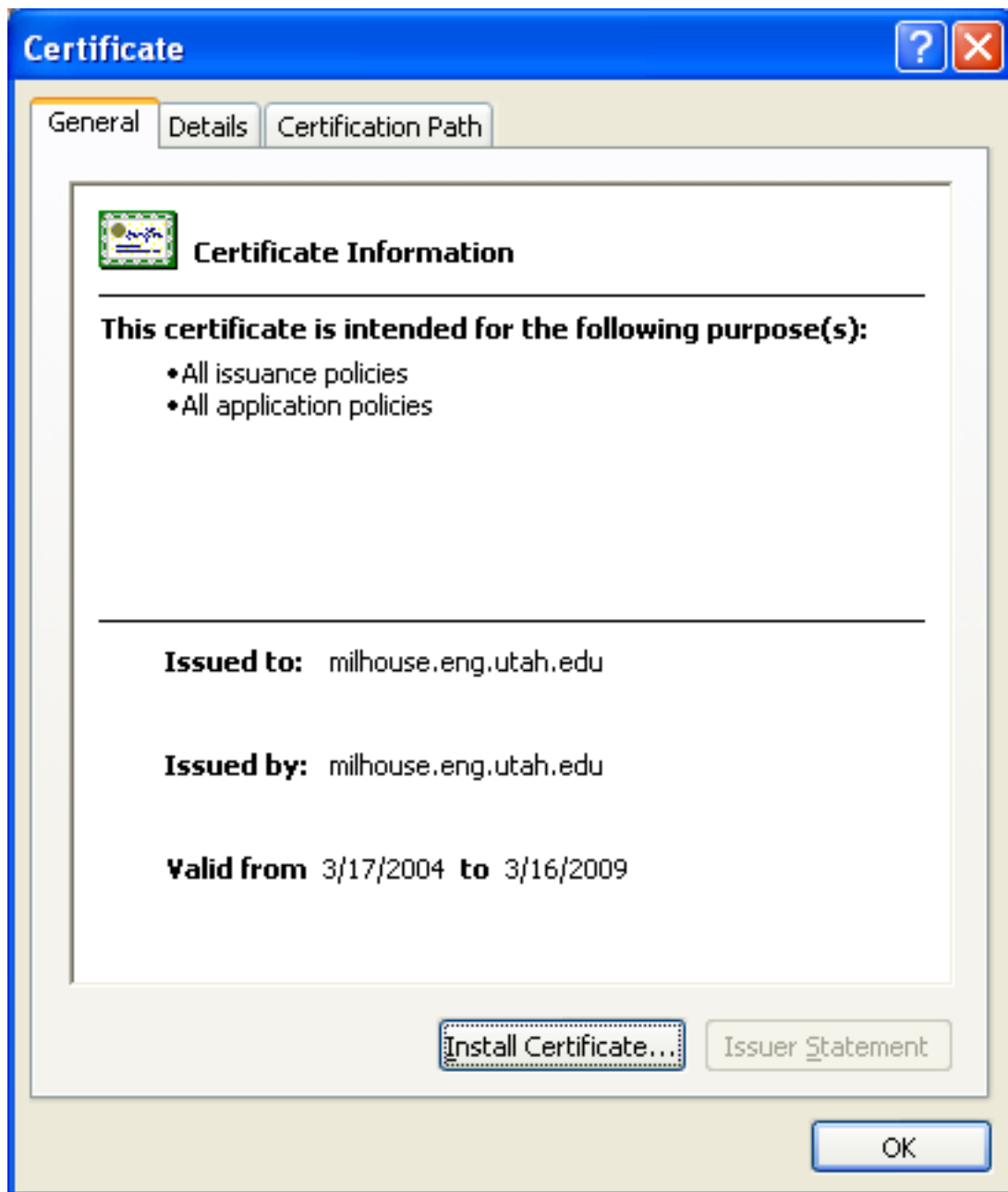
Congratulations you have successfully installed the ROOT certificate. You should now be able to visit any of our secure sites without having to worry about security warnings.

Installing the Root Cert in Internet Explorer

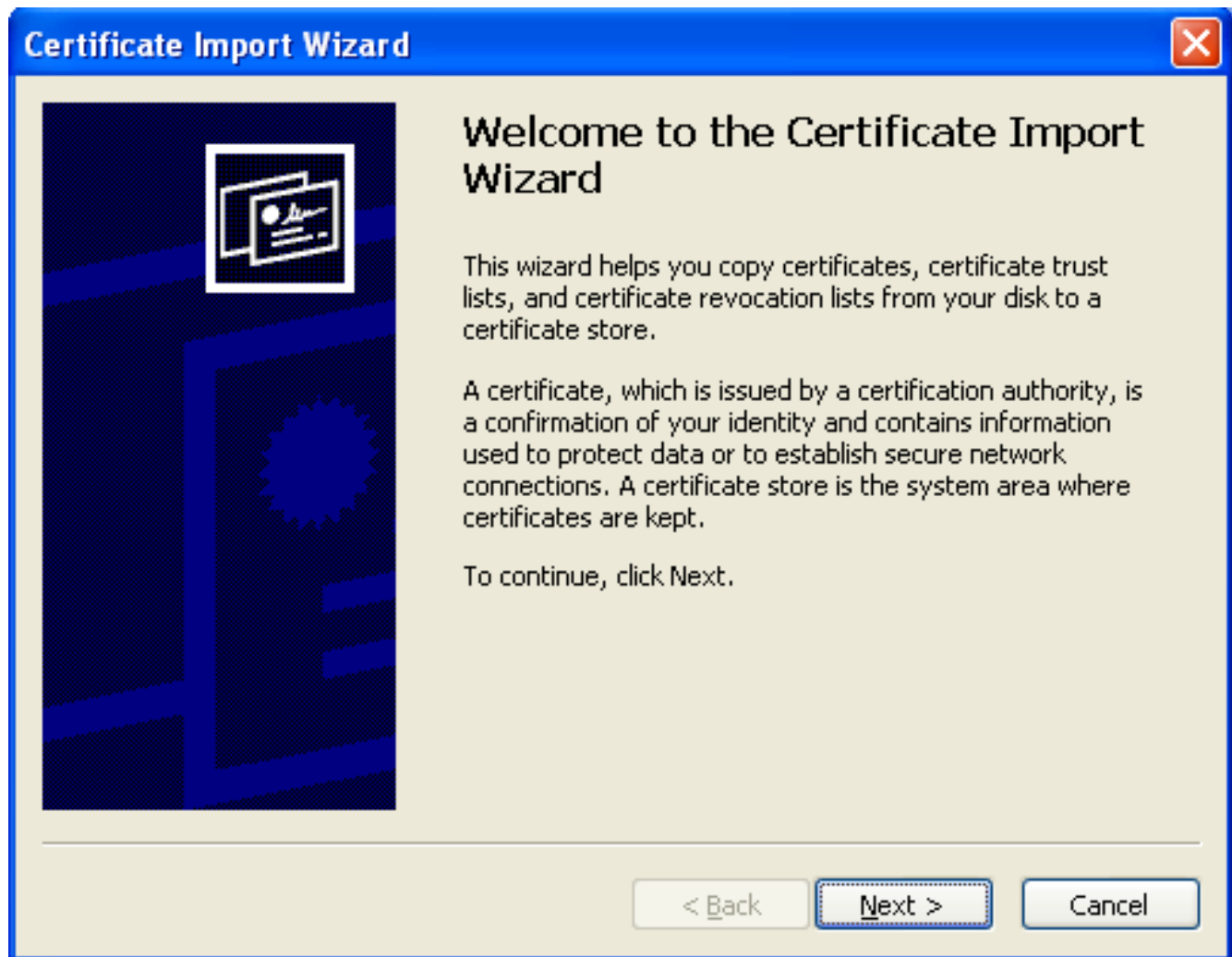
- 1.) Go to www.cade.utah.edu/certs and click the file called cade.crt. You will get a pop up asking you if you wish to open, save or cancel. Click the Open button



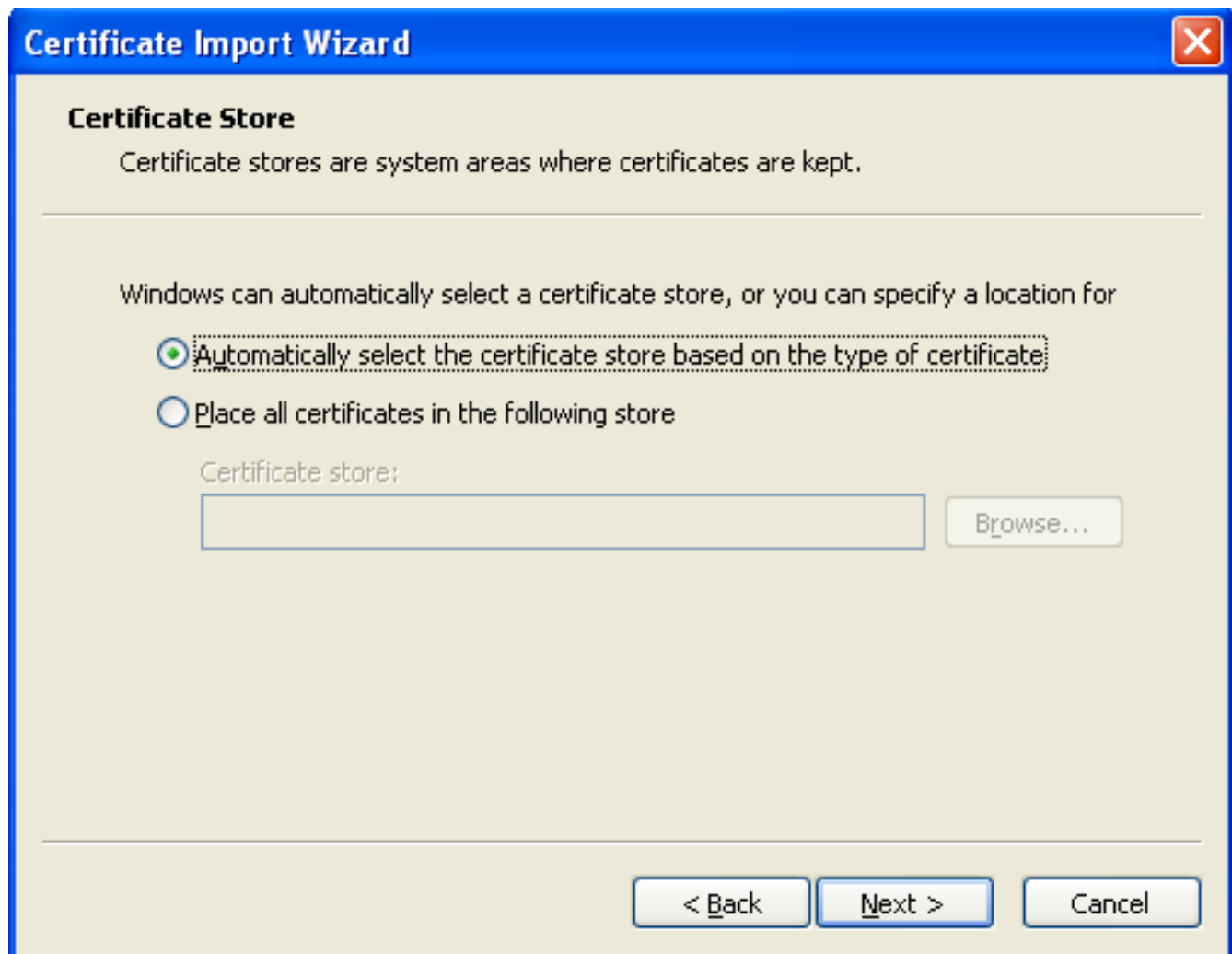
- 2.) You will now have a window appear with the details of the certificate. Click the Install Certificate button.



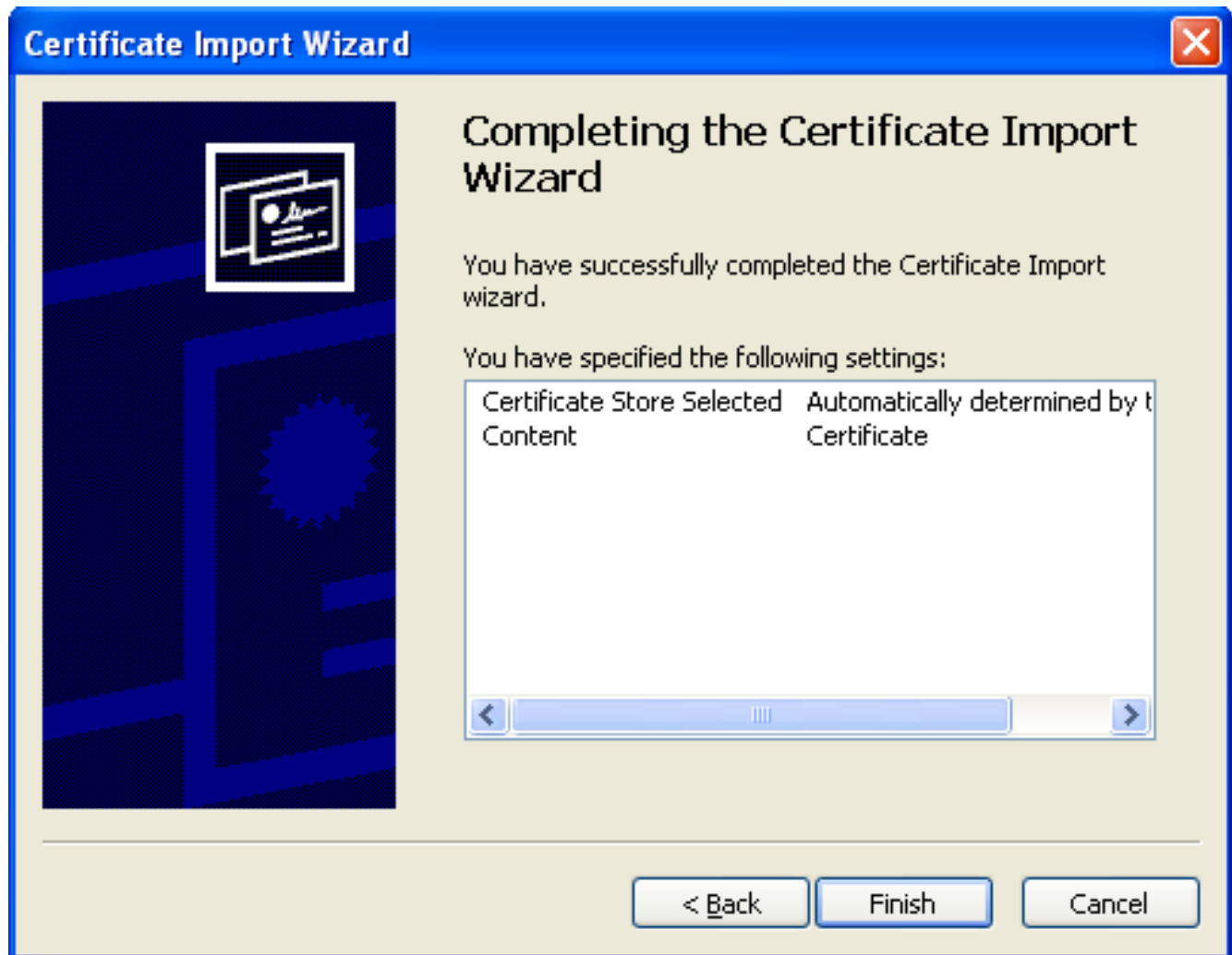
1. The certificate install wizard will now start up. Click next to begin



- 4.) Select the “Automatically select the certificate store based on the type of cert” option and click next



5.) You should now have a window with a summary of your choices. Click finish to install the certificate.



- 6.) You should now receive a pop telling you the install was successful. Click Ok to close the pop and click Ok to close the certificate window. Congratulations you have installed the CADE Root certificate.

