

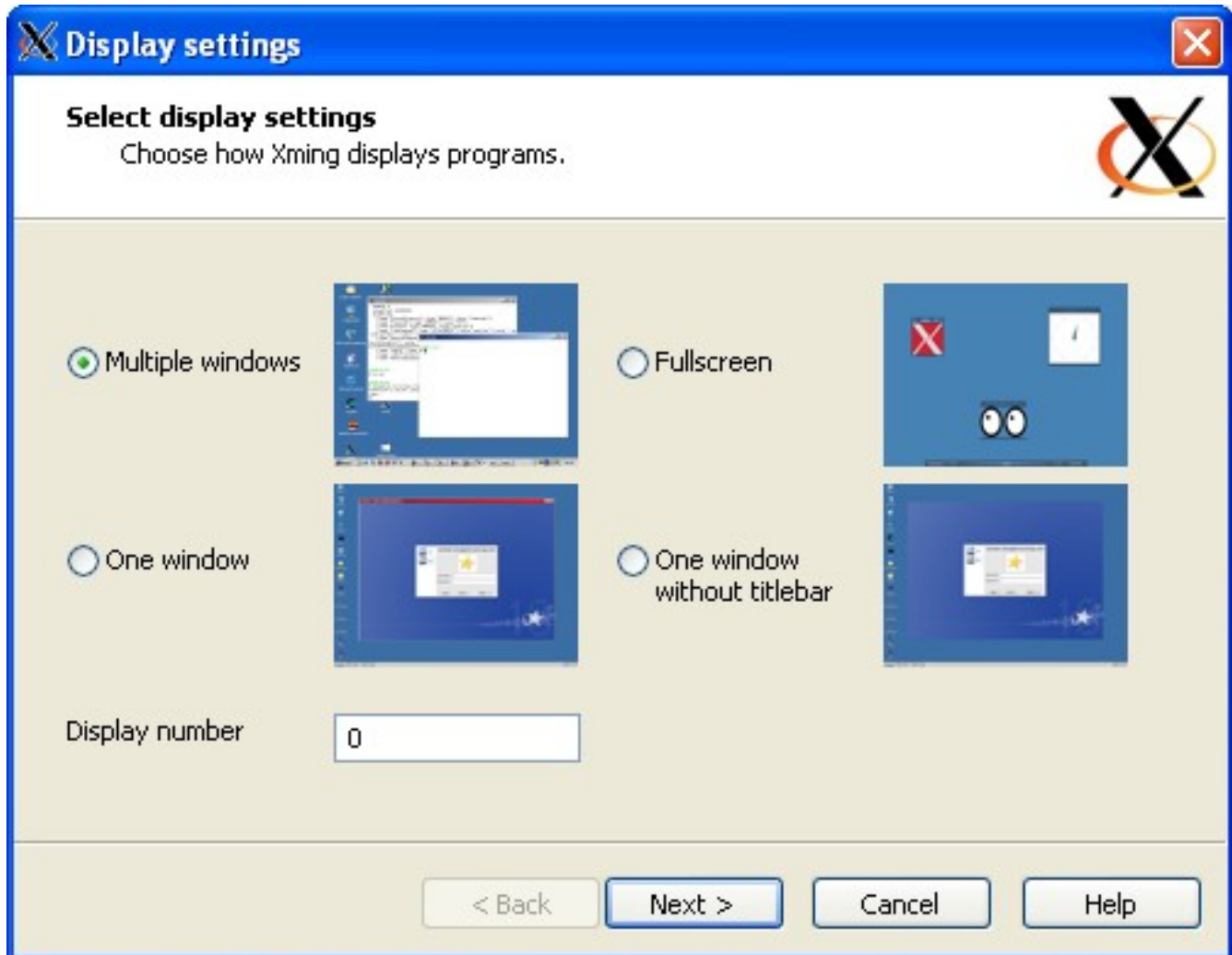
Using Xming

Now that you have Xming installed (see the Installing Xming tutorial if you have not yet done so) you need to be able to connect to the CADE lab.

This tutorial will guide on the setting up your first remote connection.

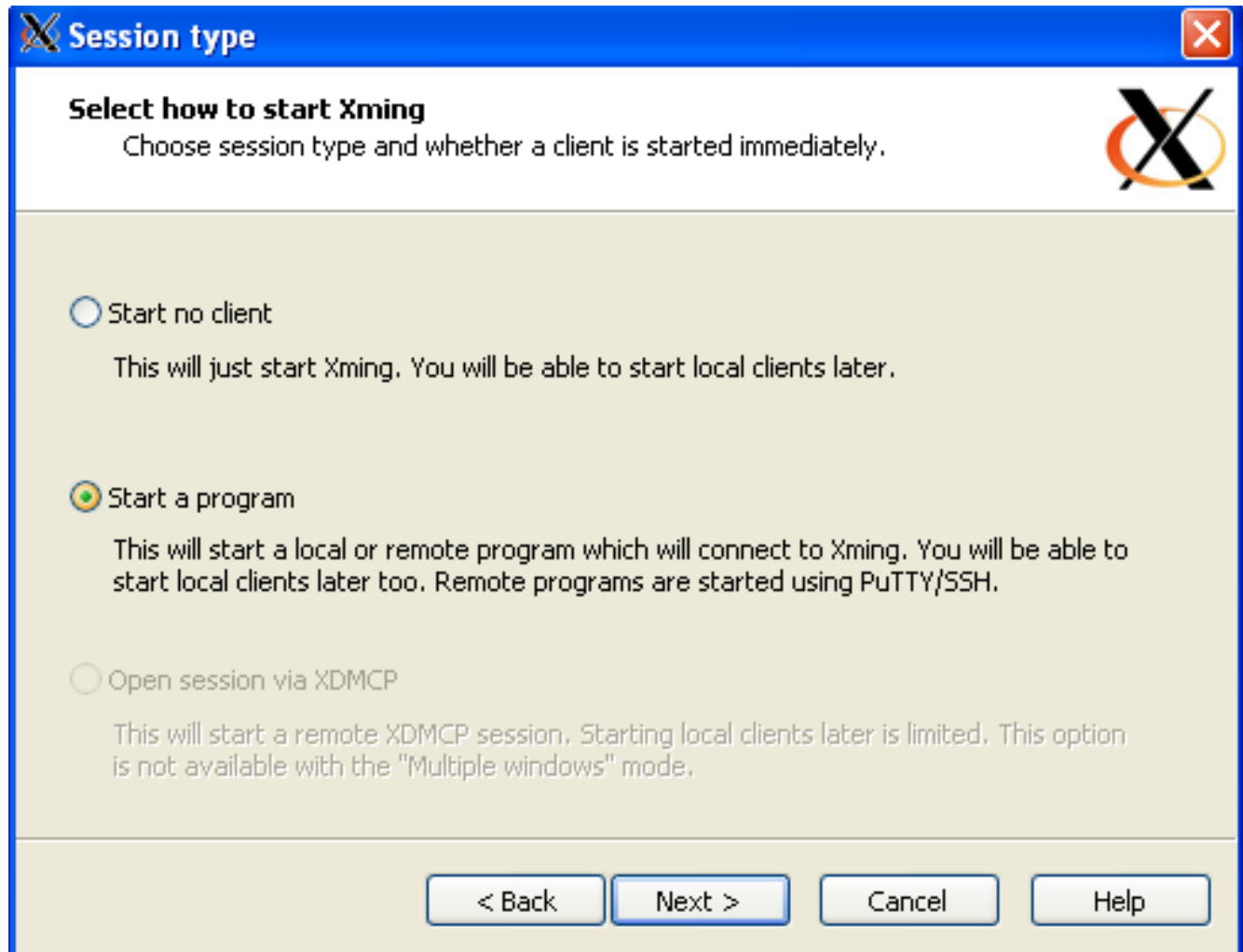
1. Start Xming Launch by double clicking the XmingLaunch icon on the desktop or by going through the start menu. You will be offered a choice of how you want to launch. For this tutorial we will use the multiple windows option.

Click Next.



2. Next select the type of session you want. To be able to use the software in CADE you will to select 'Start a program'.

Click Next.



3. Now you need to choose how you are going to connect and enter your login credentials. Select 'Using PuTTY', and then enter the host name of the machine you wish to connect to. A list of available machines can be found at http://www.cade.utah.edu/index.php?module=faq&FAQ_op=view&FAQ_id=71

Enter your CADE username and password then click Next.

Start program

Enter or choose one X client to Run Local or Run Remote
The program chooser can be populated by adding Program1="a" to Program10="j" to a config.xlaunch file.

Start program: xterm

Run Local

Run Remote

Using PuTTY (plink.exe) Using SSH (ssh.exe) With compression

Connect to computer: lab2-2.eng.utah.edu

Login as user: bacon

Password (leave blank if using PuTTY pageant):

< Back Next > Cancel Help

4. On the next screen you can enter any additional commands you want to run when your remote session begins. You can go ahead and leave this blank.
Click Next.

Additional parameters

Specify parameter settings
Enter clipboard, remote font server, and all other parameters.

Clipboard
Start the integrated clipboard manager

No Access Control
Disable Server Access Control

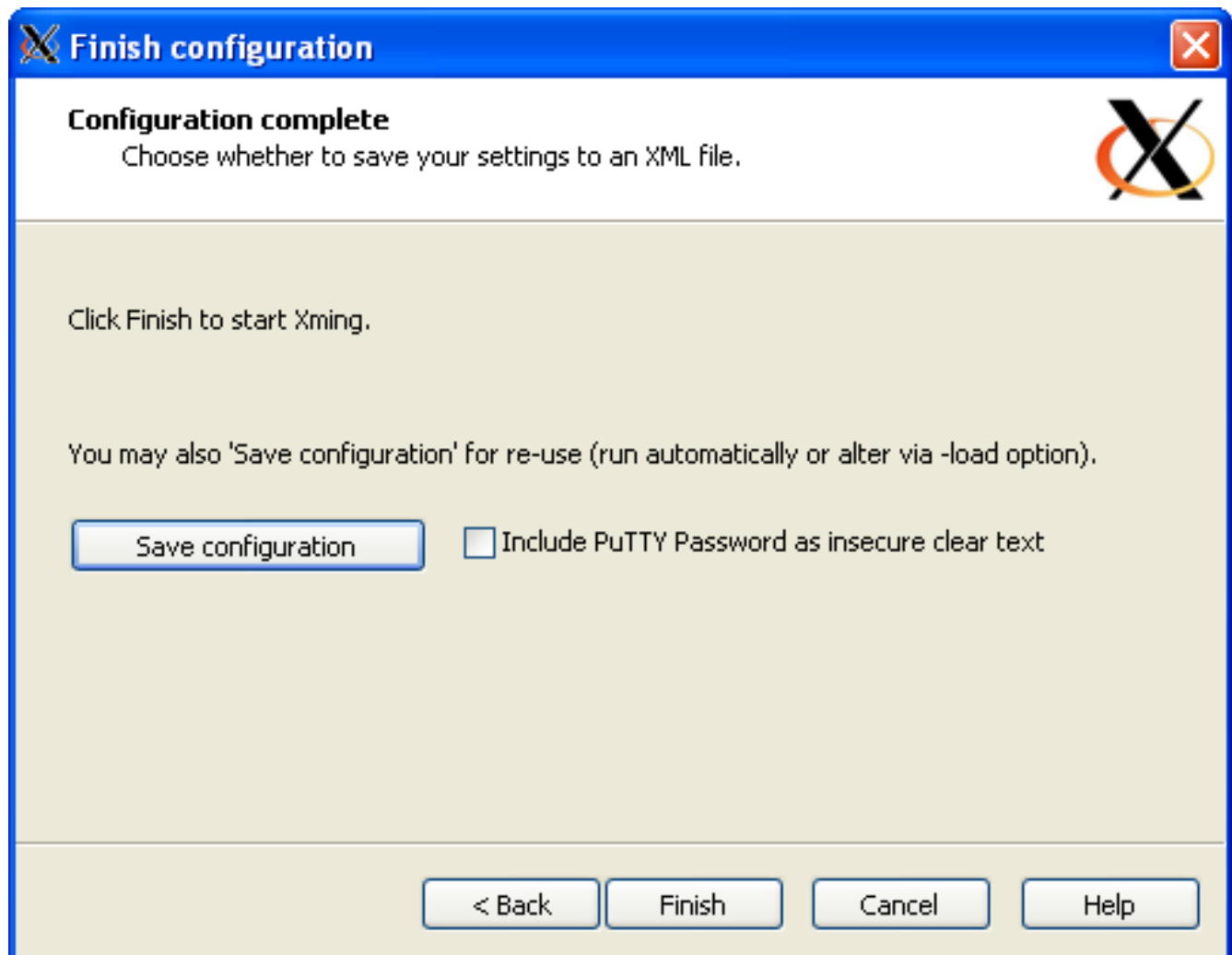
Remote font server (if any)

Additional parameters for Xming

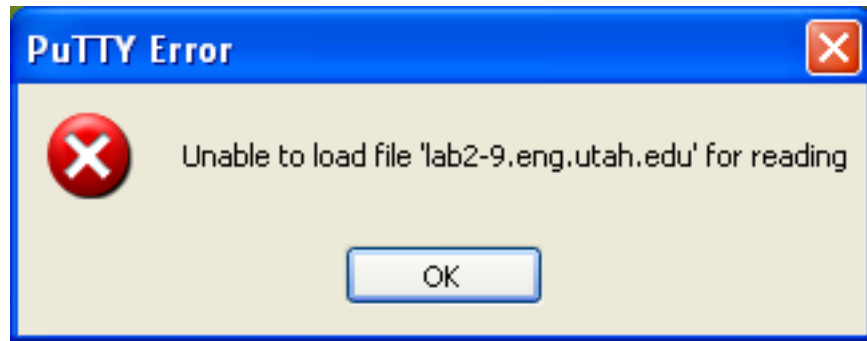
Additional parameters for PuTTY or SSH

< Back Next > Cancel Help

5. XmingLauncher now has all the information it needs. If you wish to save this configuration click the 'Save Configuration' button. Once you are satisfied click Finish.



You may receive a pop up like this:



This will often happen the first time a profile is run. You can safely click OK and move on to the next step.

6. If this is the first time you have connected to a particular machine you will get a PuTTY Alert. This is saying that PuTTY has no history of connecting to this machine before. By clicking 'Yes' you will add the ssh key to the known hosts for future use.

Click Yes.



7. Congratulations you are now remotely connected to a CADE computer. If all has gone well you should have terminal window similar to the one you would see if you were on the machine locally. From here you can run all the commands and programs as you would in the lab.

