

Using WinSCP

Ok now that you have installed WinSCP you'll want to know how to use it. Well you've come the right place. This guide will help you to upload files to your CADE home directory and download from there to your home/work machine.

Step 1) Double click on the WinSCP icon on your desktop or start the program from the Start menu. When the program starts you will get a connection window (Fig.1).

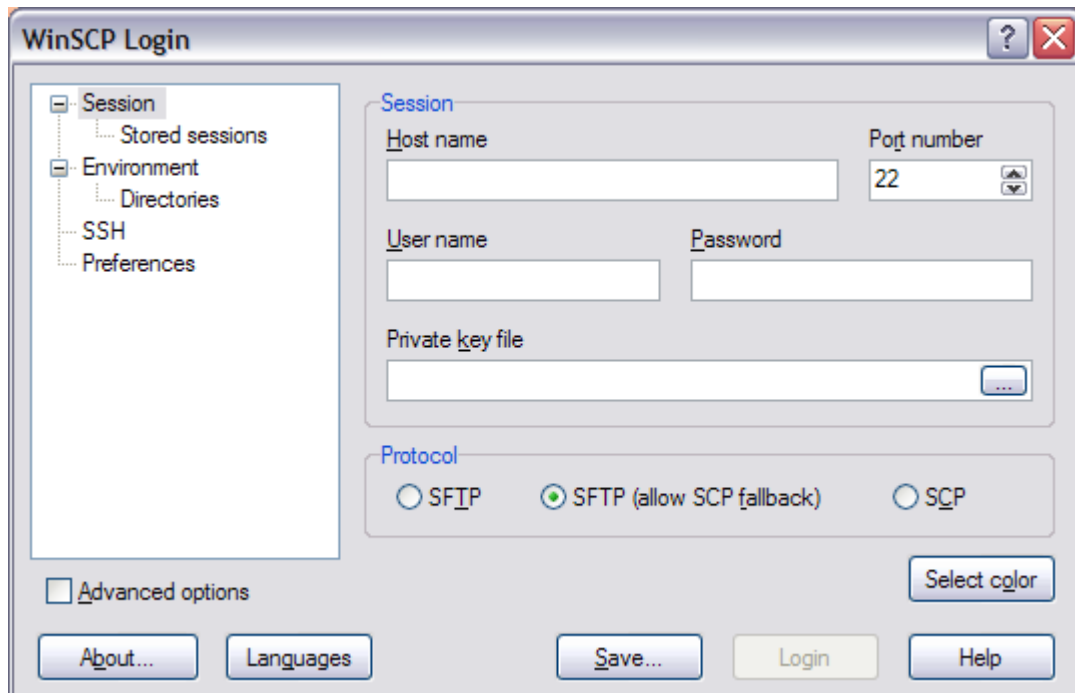


Fig.1

Step 2) You need to tell WinSCP where you want to connect to and how you want to do it. In 'Host Name' enter the full name of the machine you wish to connect to (e.g. Lab1-4.eng.utah.edu) then enter your CADE login name and CADE password. Finally select SFTP (allow scp fallback) from the protocol section. You should end up with something like Fig.2. If it looks the same then click on 'Login'

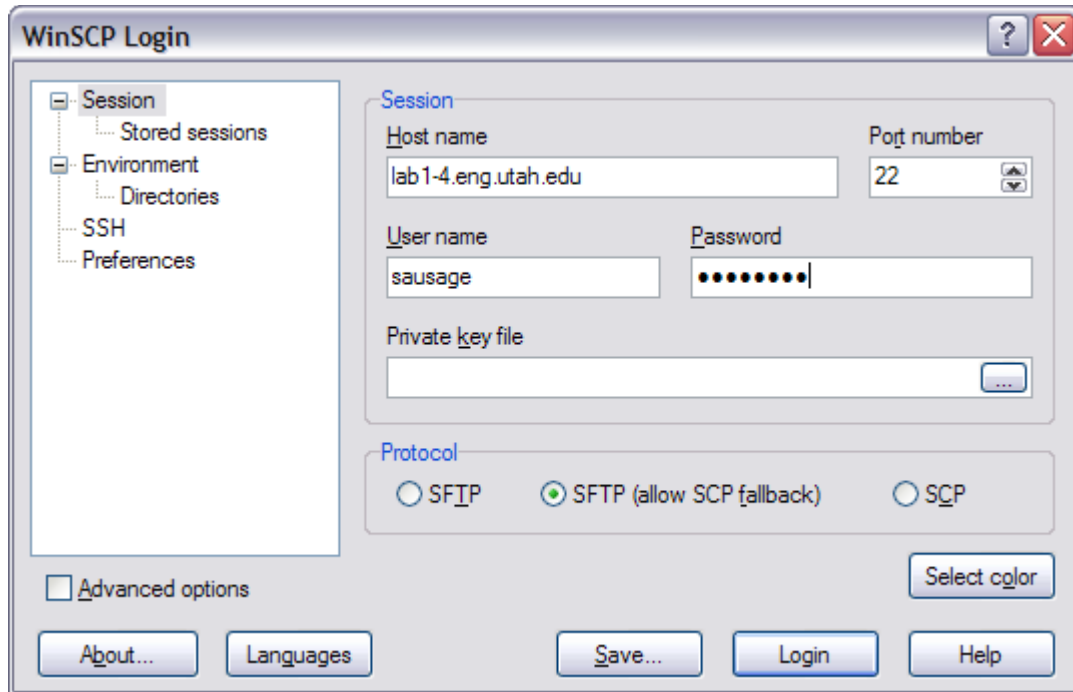


Fig.2

Step 3) A window will briefly appear while you are connecting. If everything goes well you will end up with the WinSCP window (Fig.3). The column on the left is your local directory (the machine you are on) and the window on the right is the remote directory on the machine in the CADE lab.

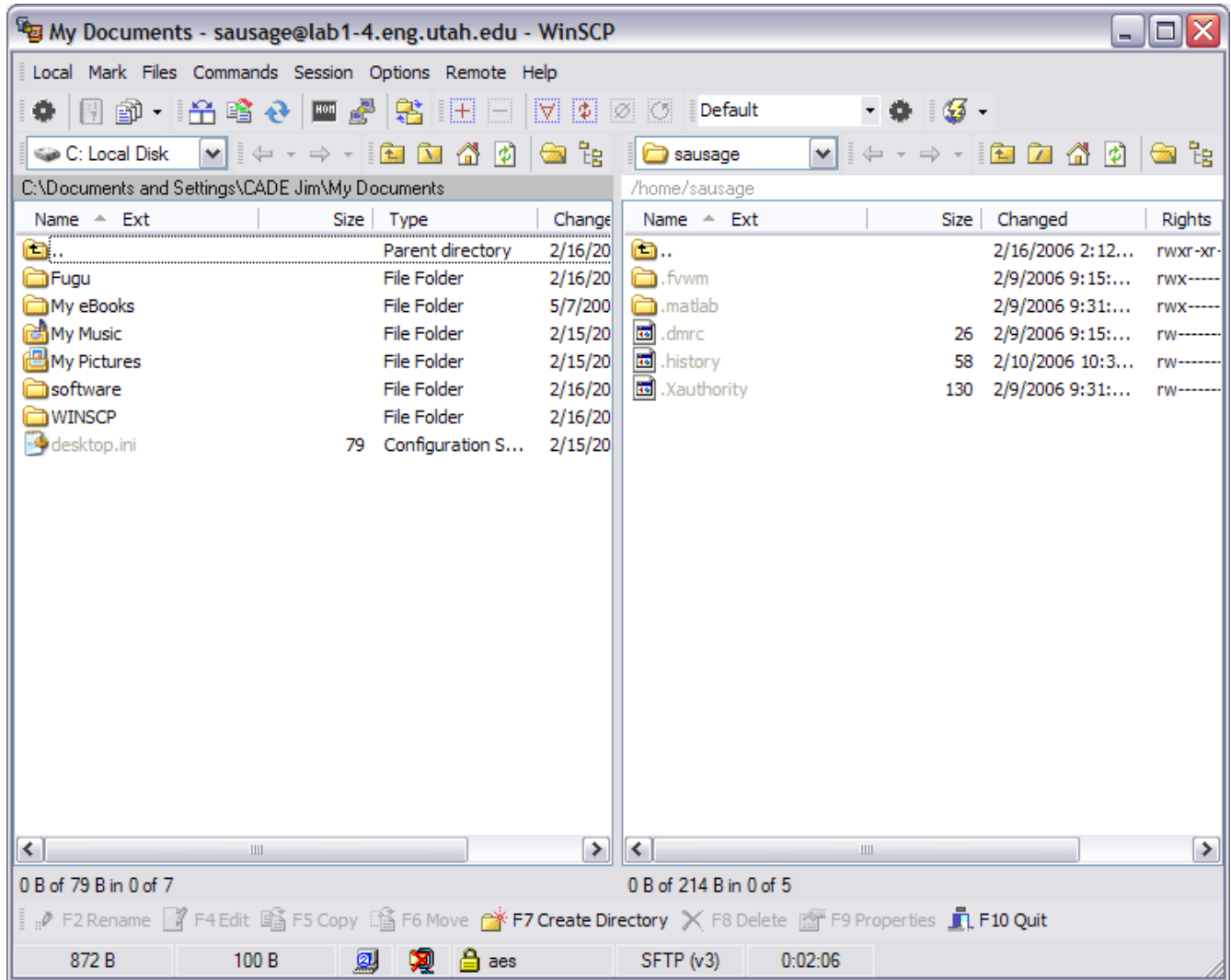


Fig.3

Step 4) To transfer files from the local directory to the remote directory, simply drag them over and drop them into the file you want them to go into. You will receive a message asking you to confirm the copy (Fig.4). Click 'copy' to confirm the transfer.

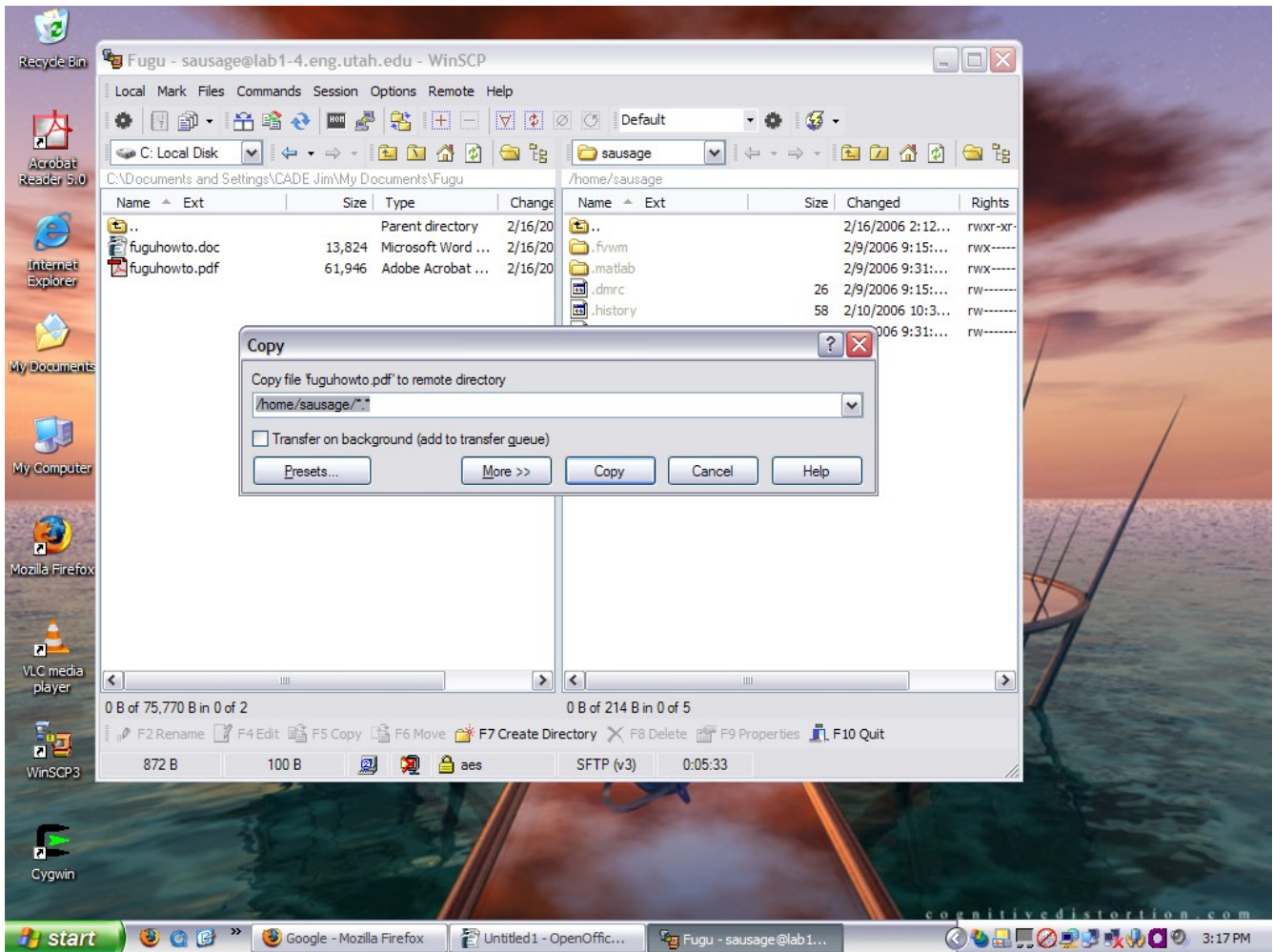


Fig.4

Step 5) The file will now show up in the remote directory (Fig.5). Congratulations you have successfully transferred your data. To download a file from the remote directory to the local directory follow the same procedure.

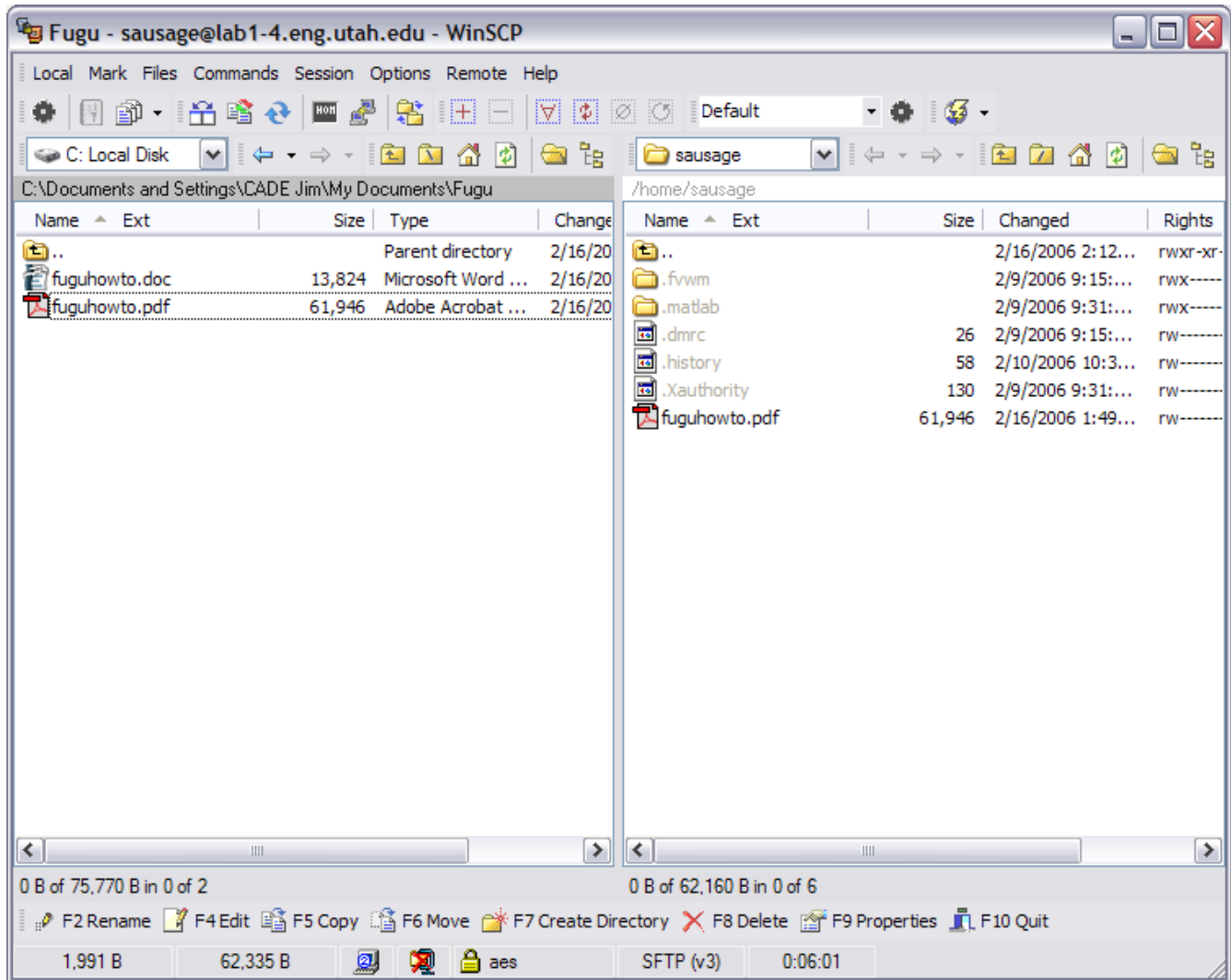


Fig.5

Step 6) Once you have finished transferring your files you will need to logout. Pull down the Session menu from the top bar and click on Disconnect (Fig.6).

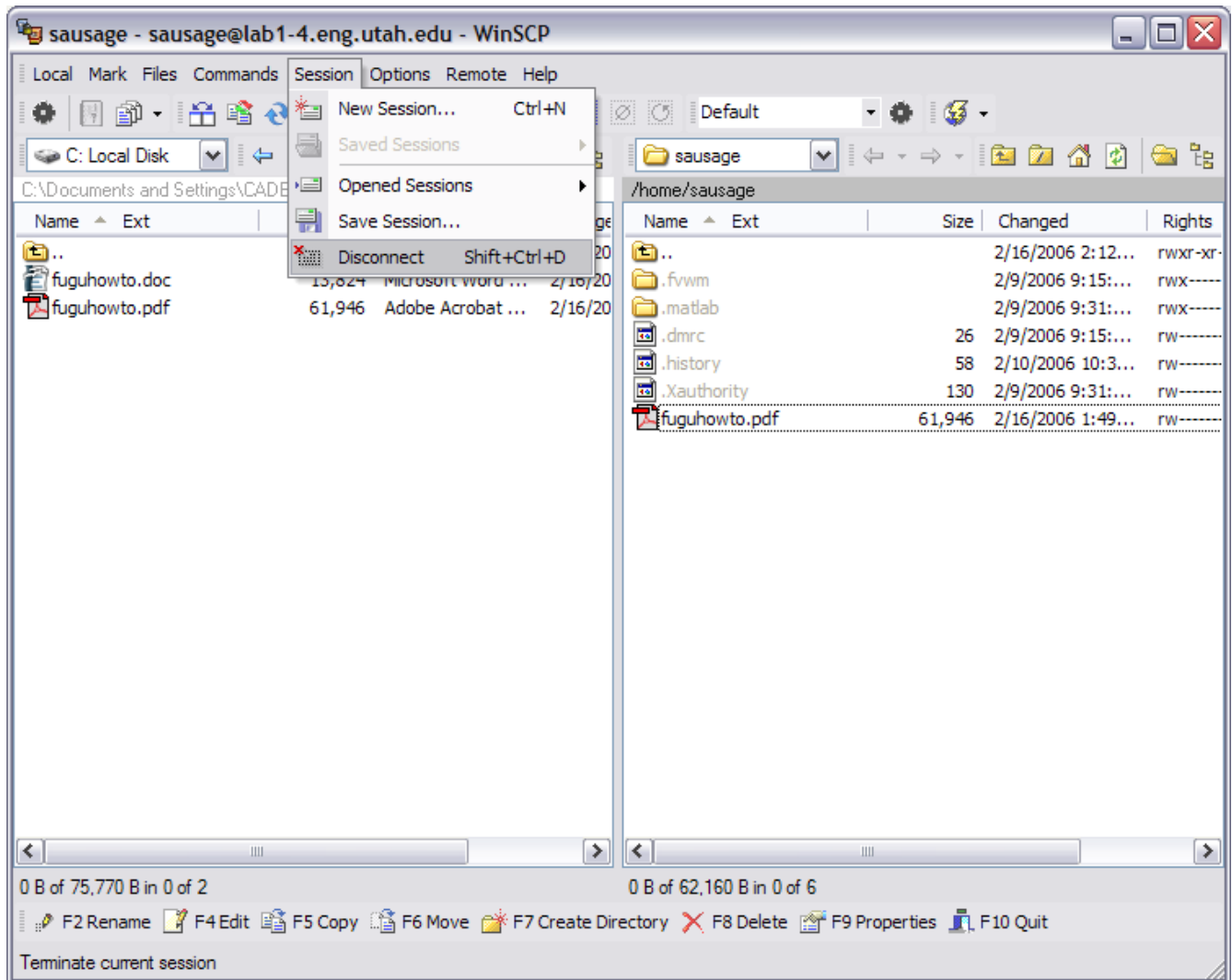


Fig.6

Step 7) You have now successfully logged out from the remote connection. You can close down WinSCP by clicking on the X in the top corner (Fig.7)

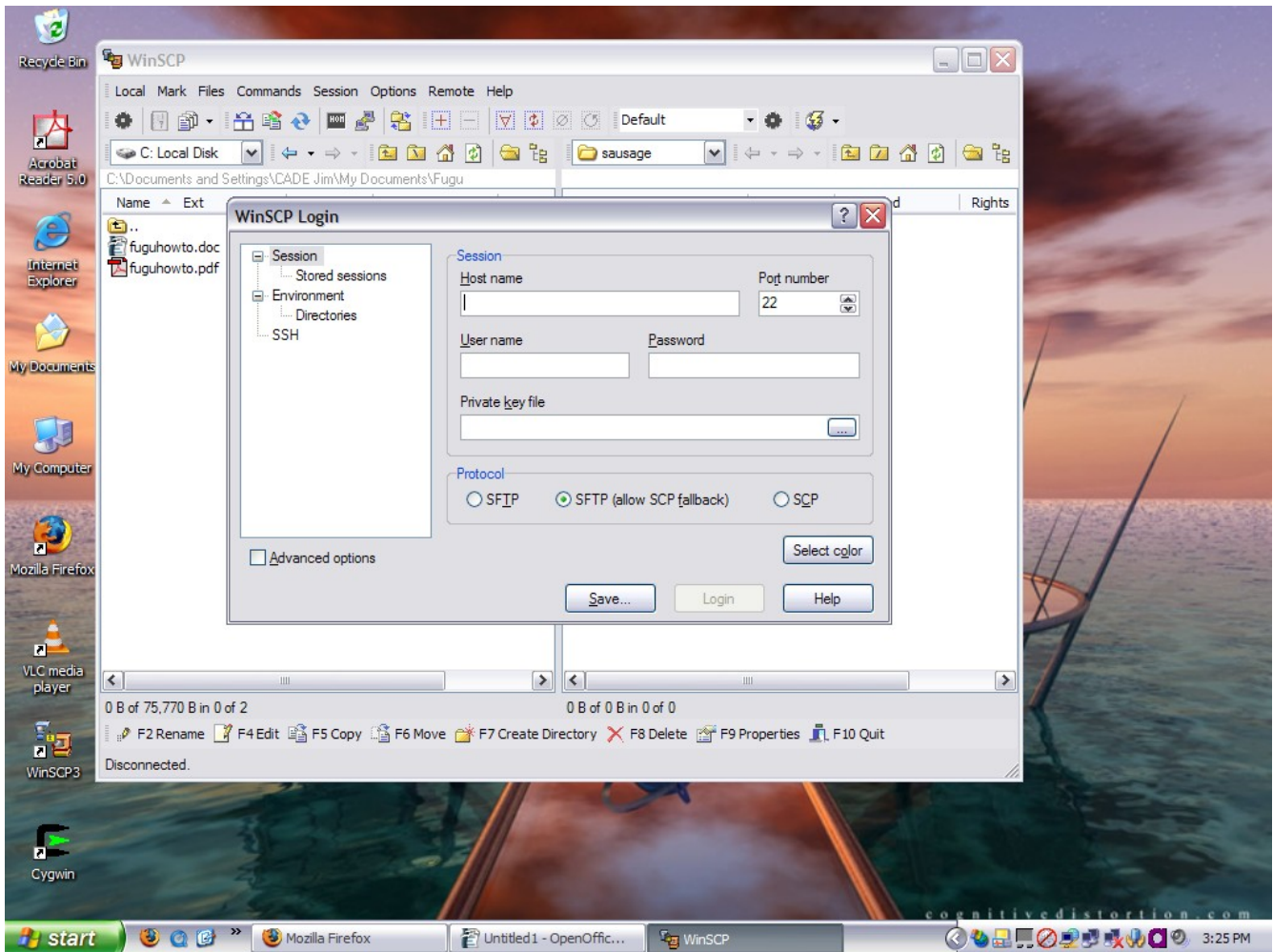


Fig.7