

# Installing WinSCP

SFTP stands for Secure File Transfer Protocol. This is the preferred method for the CADE lab. For windows users we recommend using [WinSCP](#).

Step 1) Start by downloading the setup file from the WinSCP [website](#)

Step 2) Once the file has downloaded double click on it to begin the installation. You will be greeted with a welcome screen (Fig.1). Click next.

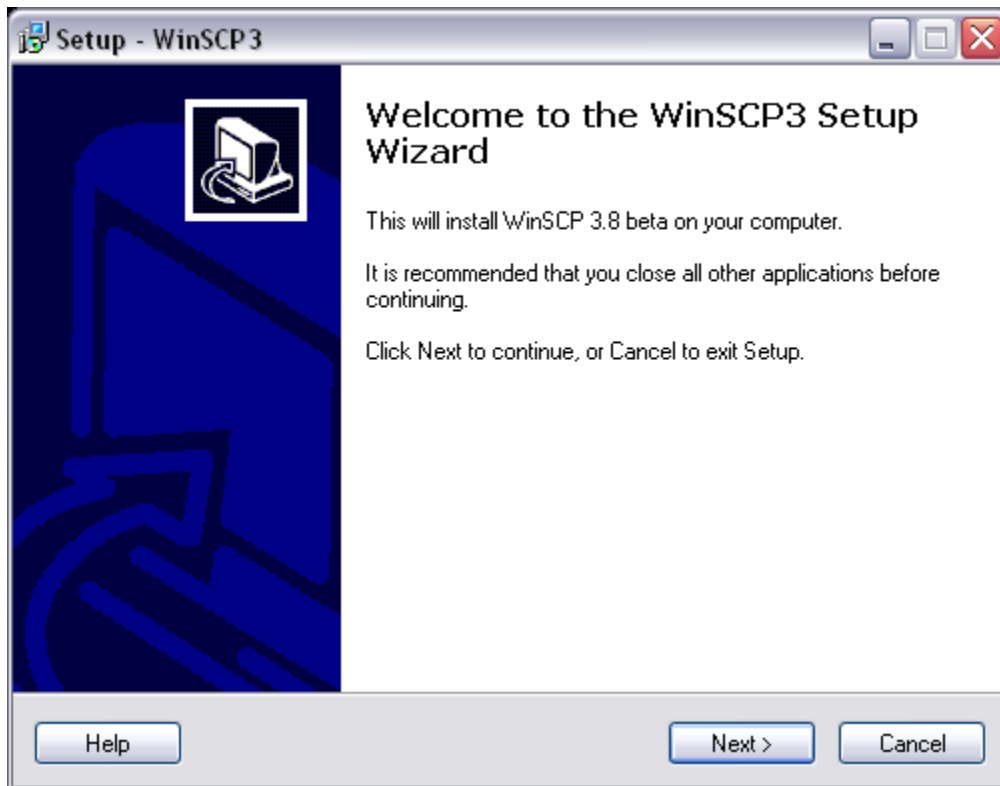


Fig.1

Step 3) You now have the EULA (End User License Agreement) displayed (Fig.2). To accept the agreement click next. If you don't accept then click Cancel to abort the installation.

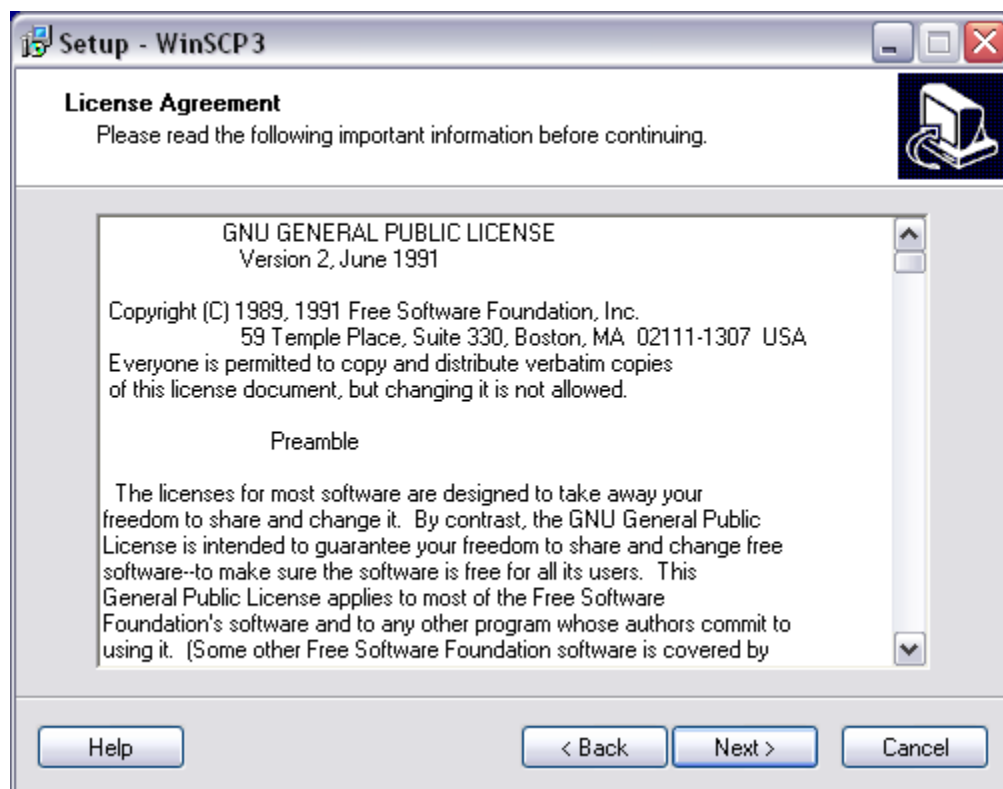


Fig.2

Step 4) You are then asked where you would like to install the program (Fig.3). The program will automatically default to the path shown so there is no need to change anything. Click next to continue.

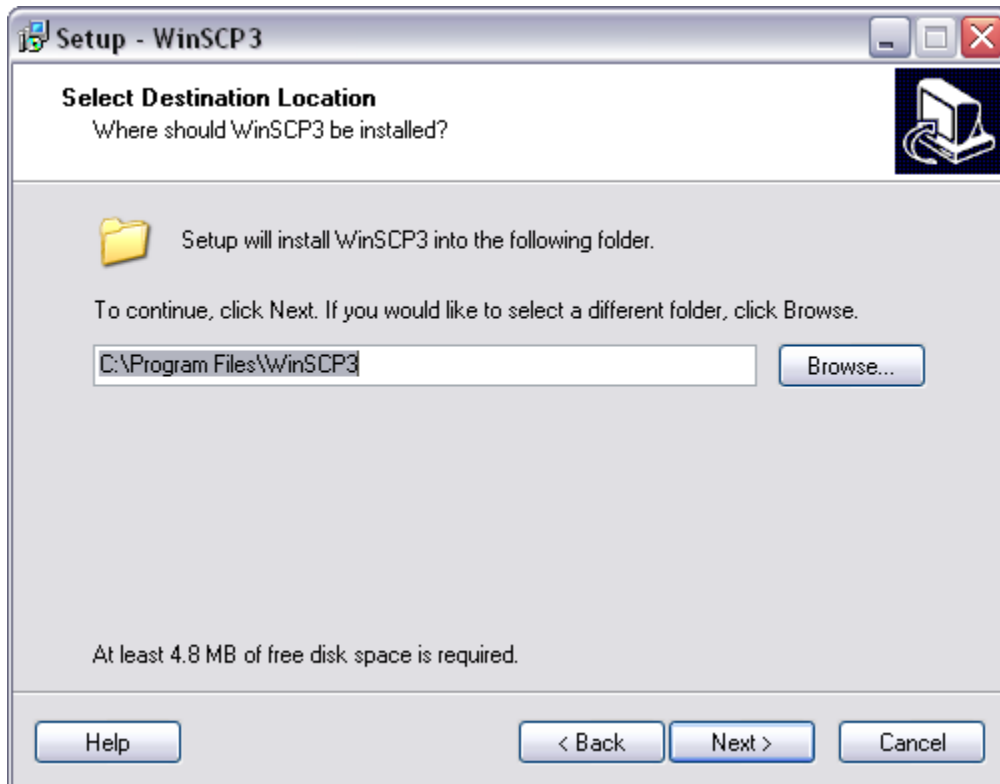


Fig.3

Step 5) The next step is to select the components you wish to install. We recommend selecting all components (Fig.4). Once you have made your selections click next.

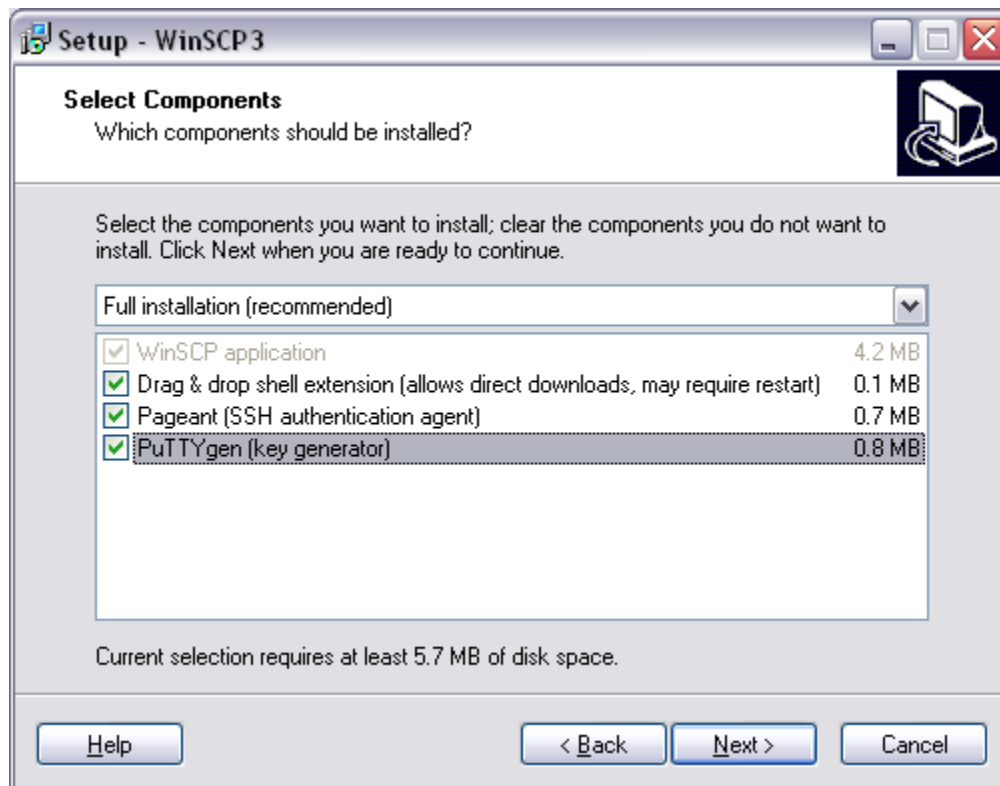


Fig.4

Step 6) Now you can choose a Start menu folder (Fig.5). This will place a folder into the start menu/all programs list. The installer will automatically create a folder called WinSCP\* or you can choose a different target. Once done click next.

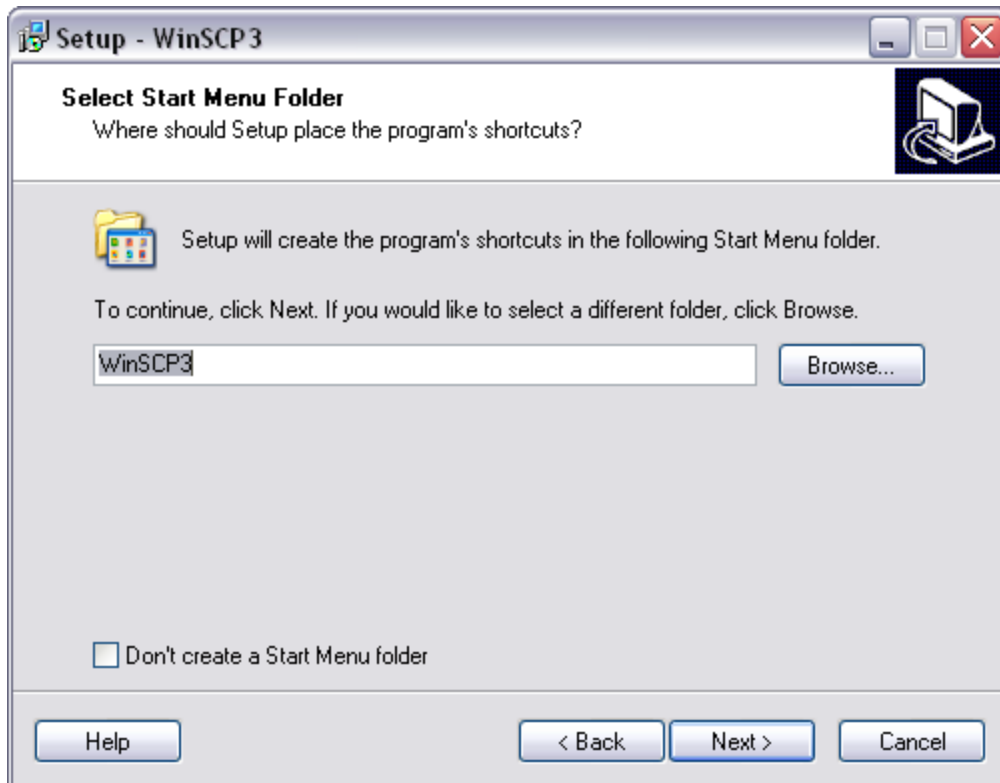


Fig.5

Step 7) You can select additional tasks to be added to the installation (Fig.6). We have left this as default. Make your selections and click next.

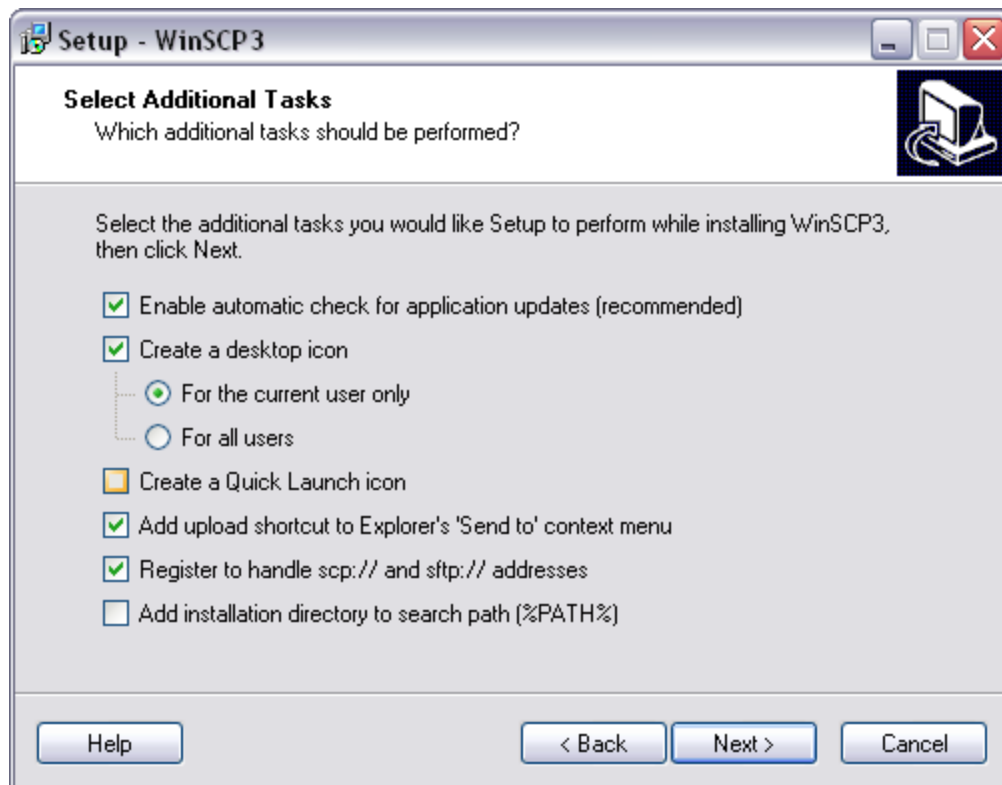


Fig.6

Step 8) Select an interface style (Fig.7) . I would recommend staying with the default style: Norton Commander. Once selected click next.

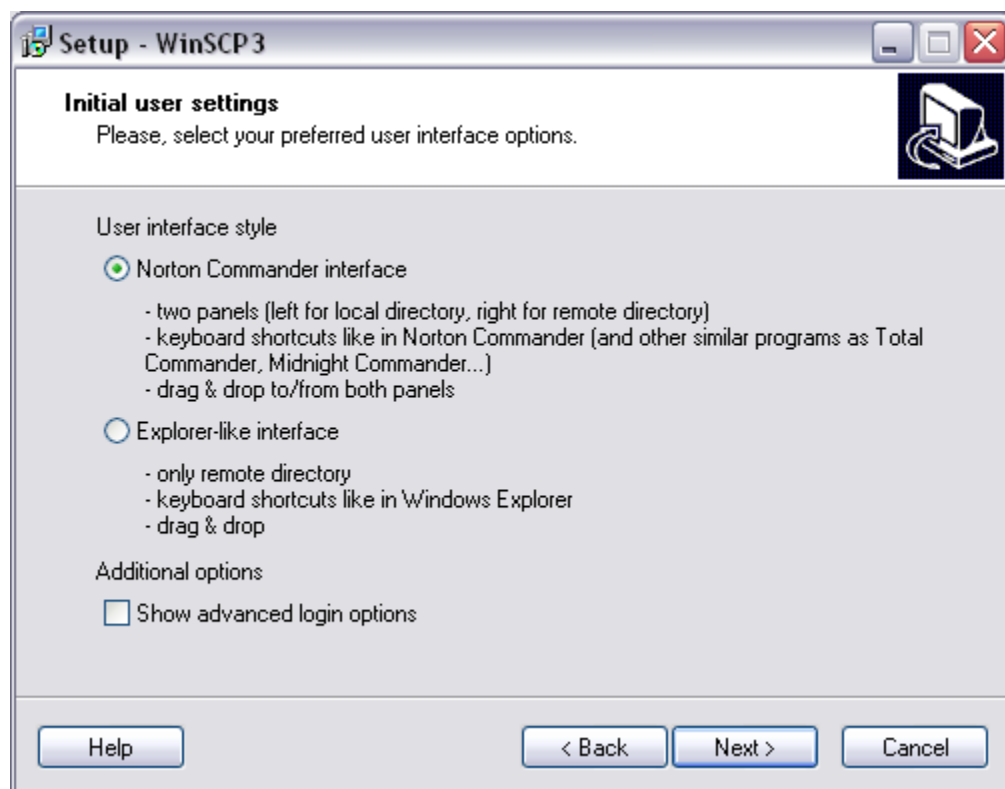


Fig.7

Step 9) You will now be given a summary of the options you have just chosen (Fig.8). If these look correct then click Install to start the installation. If you want to make changes use the back button.

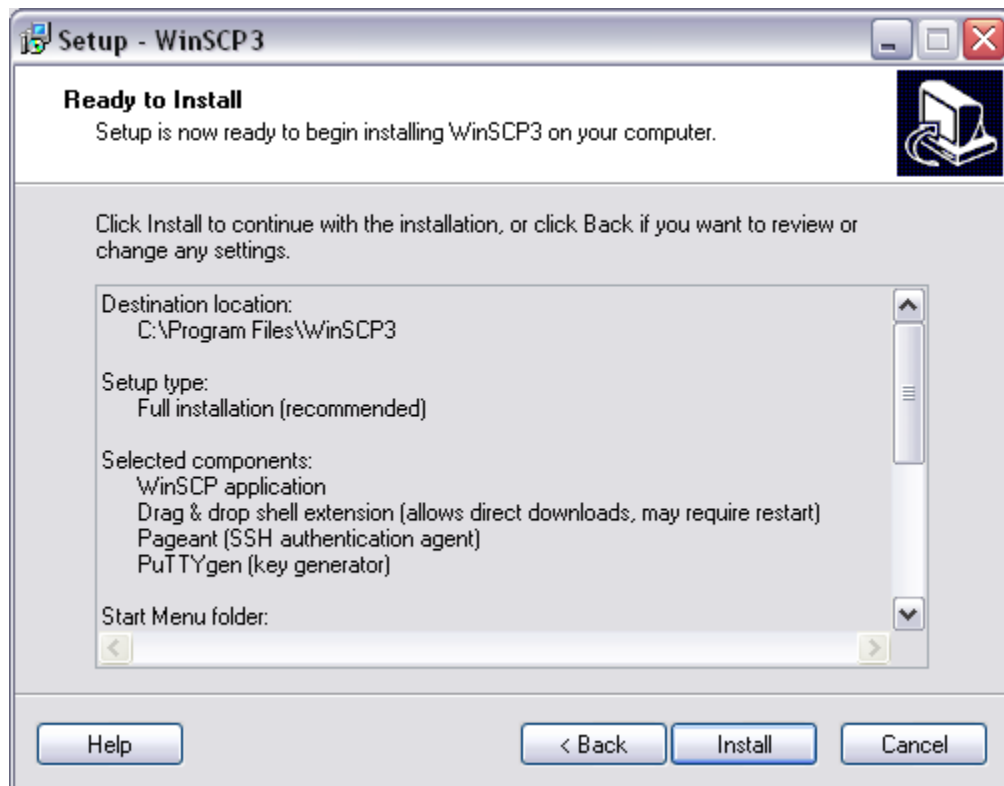


Fig.8



Step 10) WinSCP will now begin installing on your system (Fig.9)

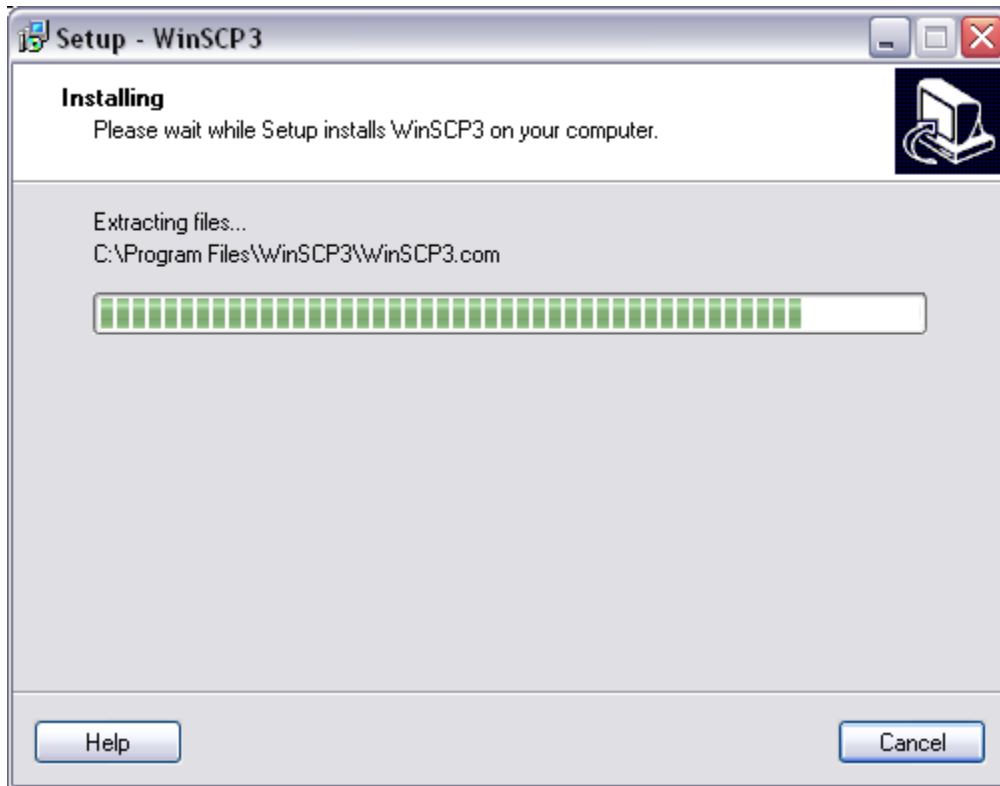


Fig.9

Step 11) When the installation is complete click finish (Fig.10). WinSCP will now be launched and you can begin the connection process (Using WinSCP tutorial).

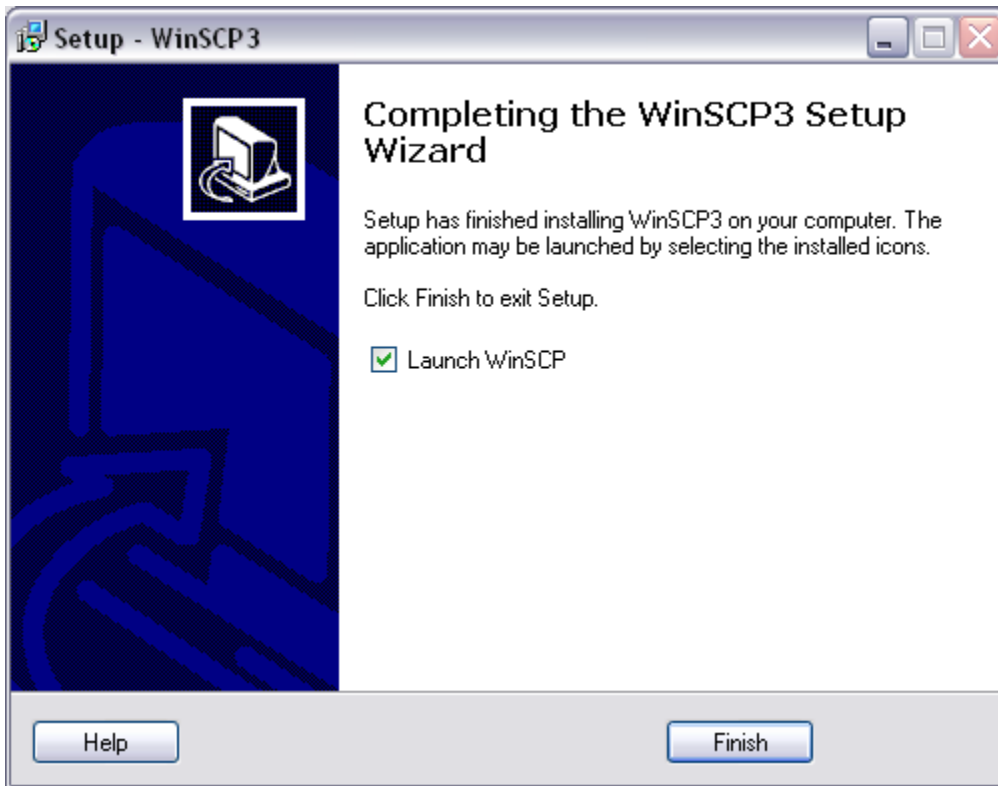


Fig.10